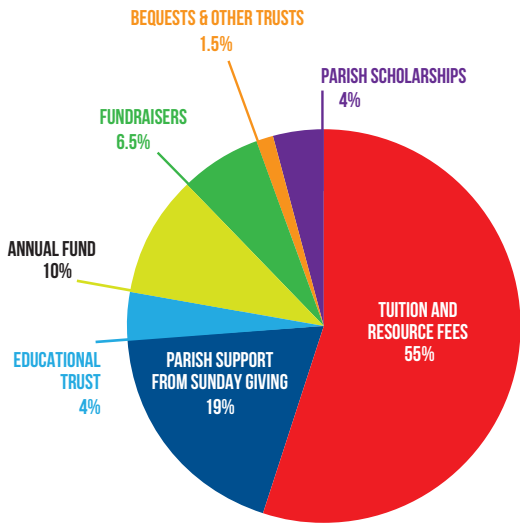


# ST. ANTHONY SCHOOLS FUNDING

*at a glance*

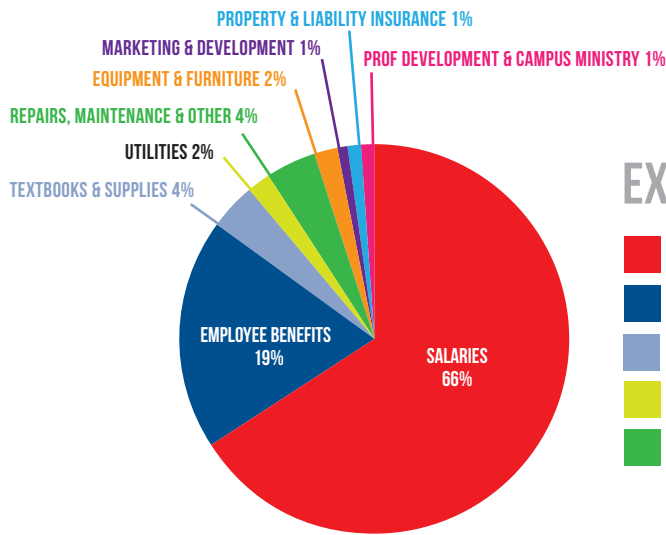
## FUNDING SOURCES



- TUITION & RESOURCE FEES** \$2,715,559
- PARISH SUPPORT FROM SUNDAY GIVING** \$917,797
- EDUCATIONAL TRUST** \$212,000
- ANNUAL FUND** \$485,000
- FUNDRAISERS** \$320,100
- BEQUESTS & OTHER CHARITABLE TRUSTS** \$80,000
- PARISH SCHOLARSHIPS** \$189,544

**TOTAL INCOME \$4,920,000**

## EXPENSES



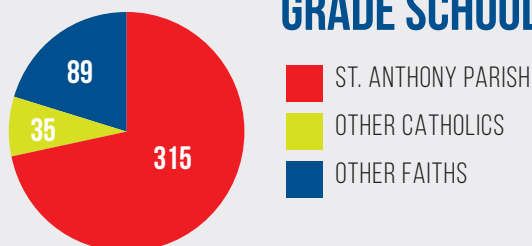
- SALARIES** \$3,265,062
- EMPLOYEE BENEFITS** \$933,206
- TEXTBOOKS & SUPPLIES** \$210,520
- UTILITIES** \$111,690
- REPAIRS, MAINTENANCE & OTHER** \$186,377
- EQUIPMENT & TECHNOLOGY** \$88,155
- MARKETING & DEVELOPMENT** \$38,000
- PROPERTY & LIABILITY INSURANCE** \$48,000
- PROF DEVELOPMENT & CAMPUS MINISTRY** \$38,990

**TOTAL EXPENSES: \$4,920,000**

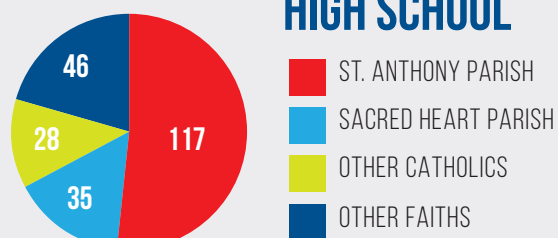
## STUDENT POPULATION BREAKDOWN



### GRADE SCHOOL



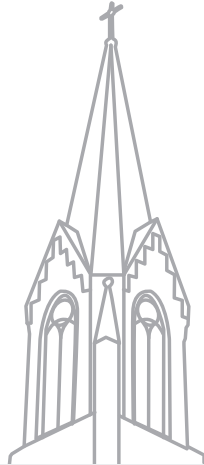
### HIGH SCHOOL



# WHAT WE DO *to keep tuition low*

## 1 PARISH SUPPORT

Funds collected during Church on Sunday comprise 18% of the Schools' budget and help offset tuition costs.



## 2 SCHOLARSHIPS & TUITION ASSISTANCE

Last year, 22% of families at St. Anthony received scholarship assistance.



## 3 ANNUAL FUND

100% of Annual Fund gifts stay at St. Anthony Schools and are added directly to the schools' operating budget.



## 4 FUNDRAISING

The tradition of the St. Anthony Parish Picnic has greatly benefited St. Anthony Schools for more than 50 years.



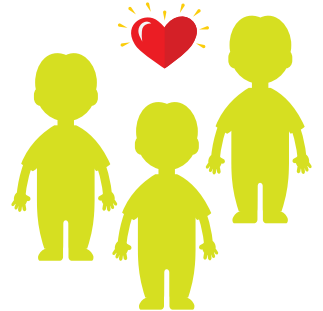
## 5 EDUCATIONAL TRUST

The St. Anthony Catholic Church Educational Trust exists for the long-term benefit of St. Anthony Schools. Trust contributions are invested in bond funds, cash, life insurance, securities and mutual funds. Trust distributions are made directly to St. Anthony Schools.



## 6 VOLUNTEERISM

Volunteers keep overall operating costs at St. Anthony Schools low. If volunteers didn't offer their services, we would have to pay for the same work to be done. This would cause our per student costs to increase, and in turn lead to an increase in tuition.



## OUR EFFORTS ARE WORKING!

We have been able to reduce tuition increases over the past decade. We hope to continue lowering the average yearly tuition increase.



**10%** 2000-2010  
AVERAGE YEARLY  
INCREASE

**4.2%** 2010-2020  
AVERAGE YEARLY  
INCREASE

**2.9%** 2020-2025  
AVERAGE YEARLY  
INCREASE